

KUNIHICO SATAKE

CODEX photographer's portfolio 2012

INDEX	01
Information	02
Profile	03
Works	04-05
Person	06-07
Architecture	08
Still life	09
Foods	10
Brochure	11
book / etc.	12-13
Movie	14
Award	15

What is CODEX ?

# CODEX

CODEX is our office name, and actually French word as distribut(publish)ing widely the Bible. However we take some of its idea and also just playing on words “CO= co-operate, DE= de-sign, EX= ex-periment”.

We do total creation, not only photography also others, then make a certain chain reaction for photography, graphic/motion-design, sounds and etc.. We can overlook whole creation and lots of its experience, it means going into effective way, good(=high) quality, reasonable cost.

Everything is now ready for your NEED, SATISFACTION and GOOD RESULTS!!

What we do?

photography & movie (on this portfolio)

Visual Direction ART DIRECTION, PRESENTATION, MAKING CONCEPT, PLANNING, etc.		
People		
FASHION, HAIR-cosmetics, PORTRAIT, DANCE		Still Life ARCHITECTURE, HOTEL, FOOD, PRODUCT (in-ex_terior)
Other		
LANDSCAPE, TOURISM	Photo Editing DIGITAL_RETOUCHING	Technical Info. degital & film_ 35m/m, 6x6, 6x7, 6x12, 4x5, color/mono print

design

STILL GRAPHICS, LOGO, BOOKS, PACKAGE	MOTION MOVIE, WEB, and etc...
-----------------------------------------	----------------------------------

sound  
sound\_effect, BGM, and etc...

collaborators  
extra\_Photographer, Hair & Makeup, Designer, Artist, and etc...

STUDIO space



contact

photographer & director

KUNIIHIKO SATAKE

mobile 070-5505-2849 (Japan)  
e-mail kuni@codex-on.com

office

**CODEX** total creation & studio

address #401 3-13-13 shimomeguro meguro-ku Tokyo 153-0064 JAPAN  
tel/fax +81-3-3714-8388 website www.codex-on.com e-mail info@codex-on.com

name

photographer & director

KUNIHICO SATAKE

Personal history

- 1991 work at a commercial photo studio in Kyoto
- 1992 work as a video engineer in Barcelona
- 1993 work at a photo studio, then at a printing company in Kyoto
- 1997 start as a freelance photographer and designer in Kyoto
- 1997 taught design and photography in Seika Art university in Kyoto and art school in Tokyo
- 2000 established "CODEX" in Tokyo
- 2002 moved studio-office at higashiyama Tokyo
- 2008 moved 1st studio+office at shimomeguro Tokyo
- 2010 a fine work prize for APA award 2009  
APA (Advertising Photographers' Association)
- 2011 now remodeling 2nd studio at kamogawa Boso

main clients

advertisements :

The Ritz-carlton, Tokyo	Brighton Hotel	KOTOBUKI	LISN (Shoei-dou)
Grand Hyatt Tokyo	Westin Hotel	Nihon sheet glass	Itochu
Hyatt Regency Tokyo	Hotel New Otani	Panasonic	NikkeiBP
Royal Park Hotel	Prince Hotels	JINRO	etc.

magazines :

ELLE DECO	25ans wedding	LIVE's	FERIC MAG
TOKYOcalender	HareYoho	Uomo	etc.

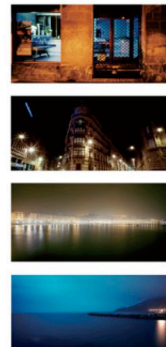
main works / exhibitions

1997	MotiveF-T "La chute dans le temps" _exhibition_photography_COSMO GALLERY	2002	Poeticaura#0 "Tempora mutantur, et nos mutamur in illis" _exhibition_photography.video_gallery TranqRoom
1998	THE PIANO PROTRUDE _promotion video_ COSMIC WONDER	2003	Poeticaura#1 "Unus erat toto naturae vultus in orbe" _exhibition_photography_Belgium Flanders museum
1999	"opa*q" Rei Harakami _photography_sublime record	2004-5	Poeticaura#2 "circulación" _video installation_video_at Lisn Kyoto, Aoyama
200	Motive-T for CON-TAC-TIX _exhibition_photography.video, sound_ORBIS HALL	2008	Poeticaura#3 "Mehr Licht" (hikari-no-honyaku) _video installation_video_at Lisn Kyoto, Aoyama
2001	MOMENTUM featuring NUMBER (N)INE _promotion video_NINE AXIS	2009	LOCA outdoor furniture 2009-2010_catalogue _prize_Advertising photography_APA award2009
2002	Poeticaura _prize_photography_digital contents granprix Tohoku		

exhibition



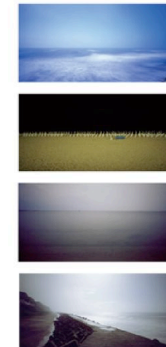
Poeticaura #0



exhibition



Poeticaura #1





Motive F-T

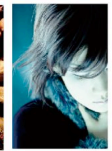
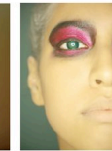
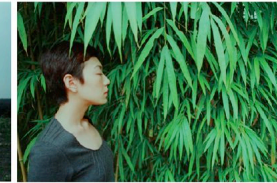
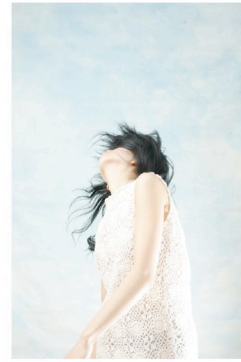


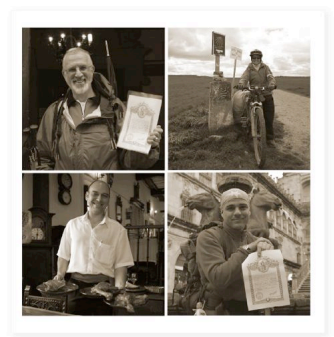
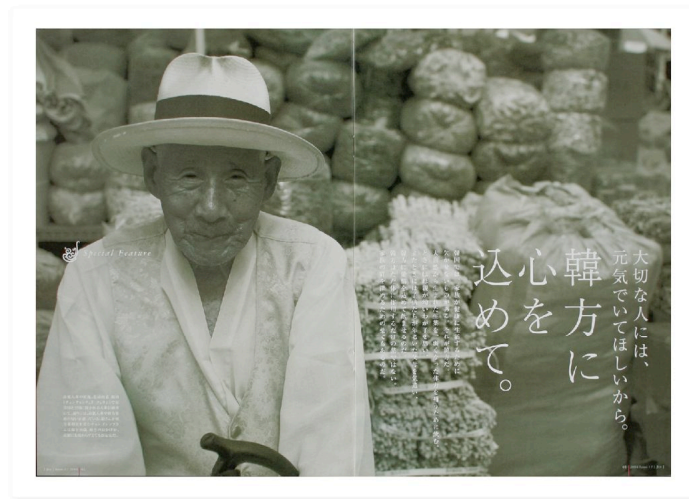
A nest of vanished yesterday

Unsettling and unsettling  
Unsettling is a word that is used to describe a feeling of unease or discomfort. It is a word that is often used to describe a feeling of being in a place that is not one's own, or a feeling of being in a place that is not one's own. It is a word that is often used to describe a feeling of being in a place that is not one's own, or a feeling of being in a place that is not one's own.











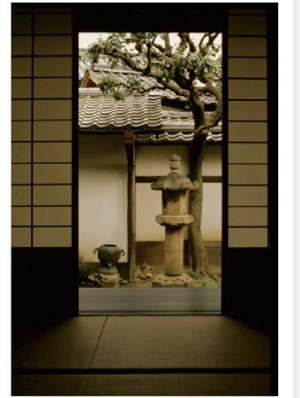
abroad



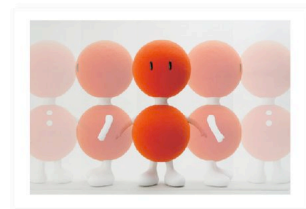
space modulator



domestic

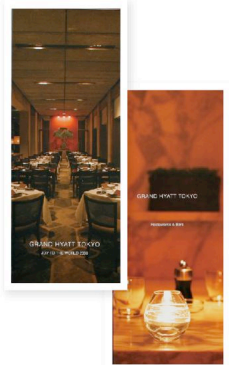
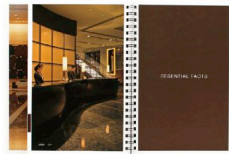
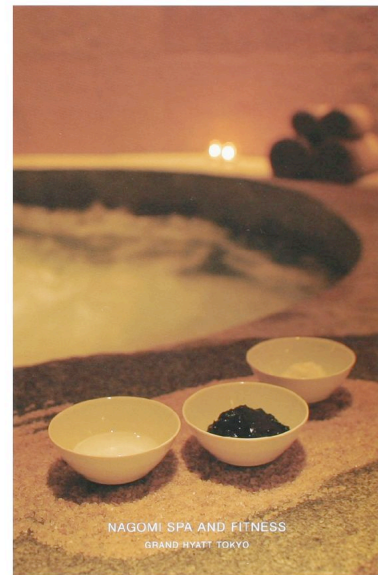
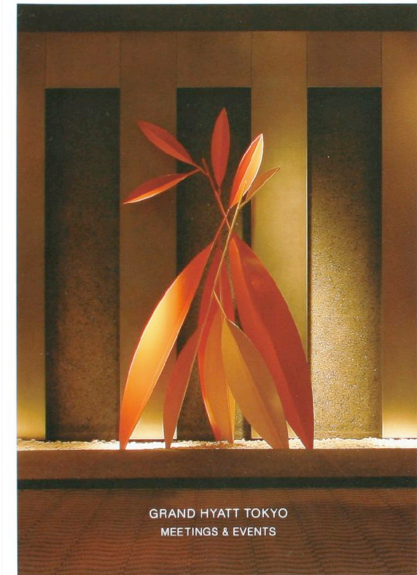




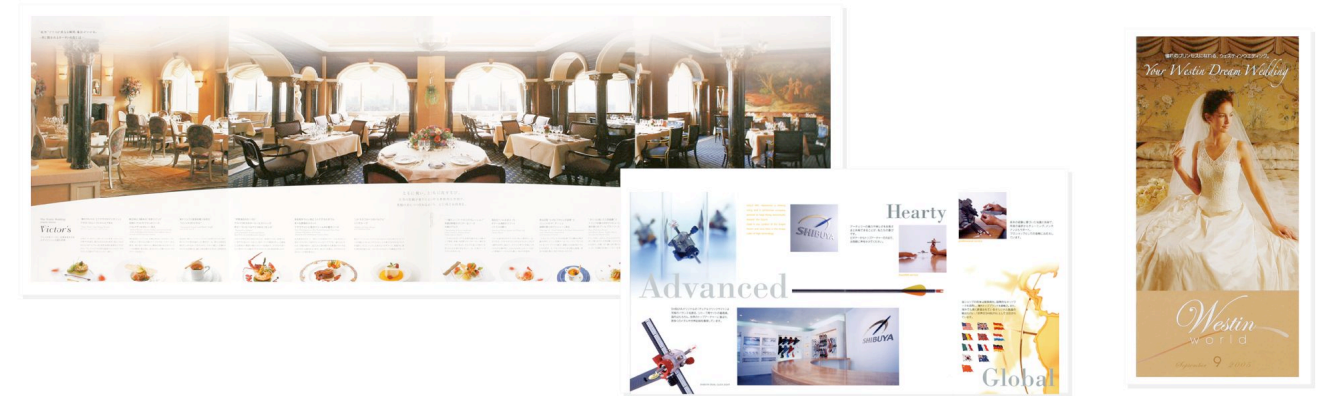




advertisements



advertisements

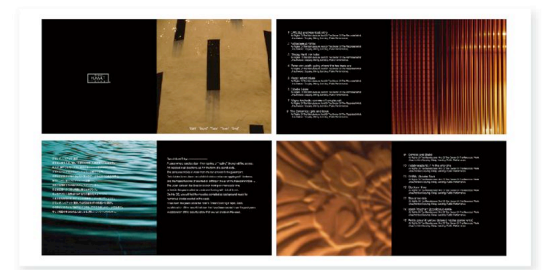


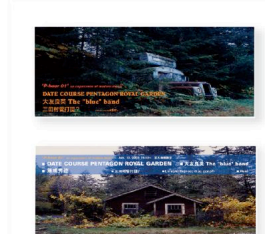
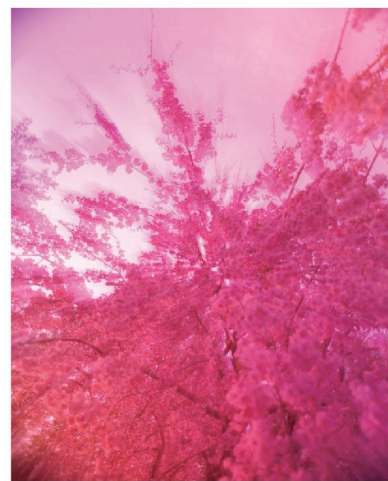
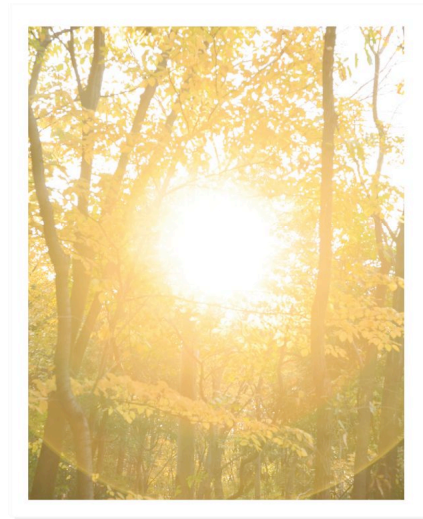


various works

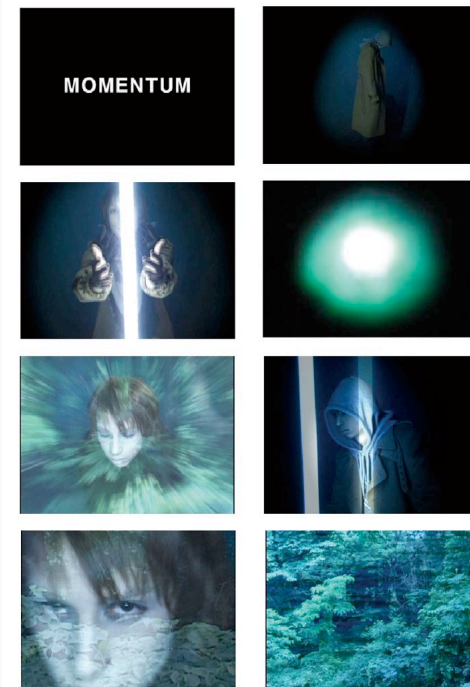
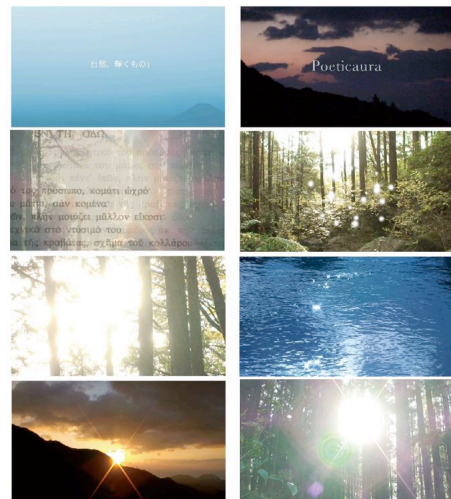
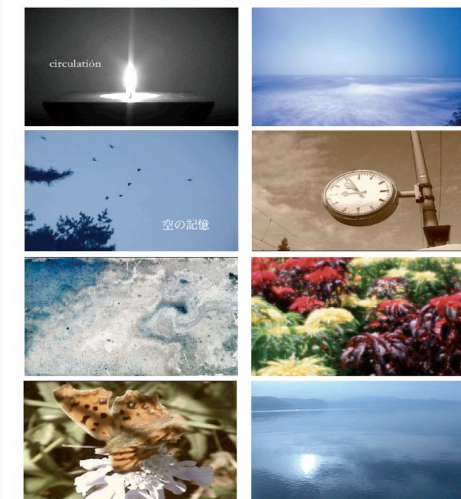


book & CD





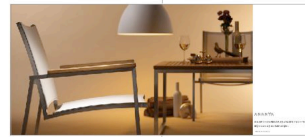
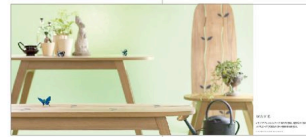
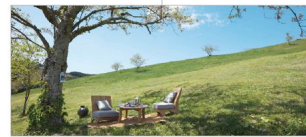
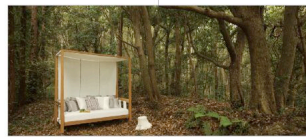
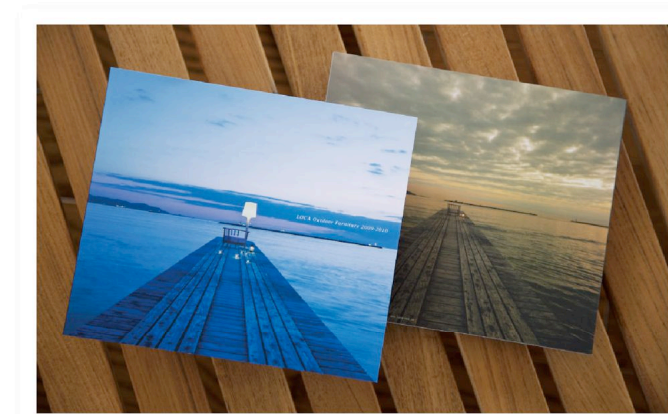






recent works (photography, creative direction)

APA(Advertising Photographers' Association) award 2009



NOTICE :

© All Rights Reserved by KUNIIHIKO SATAKE (CODEX) 2012 .  
Needs permission to use, copy, modify, and distribute this documentation(P1-15) for any purpose.